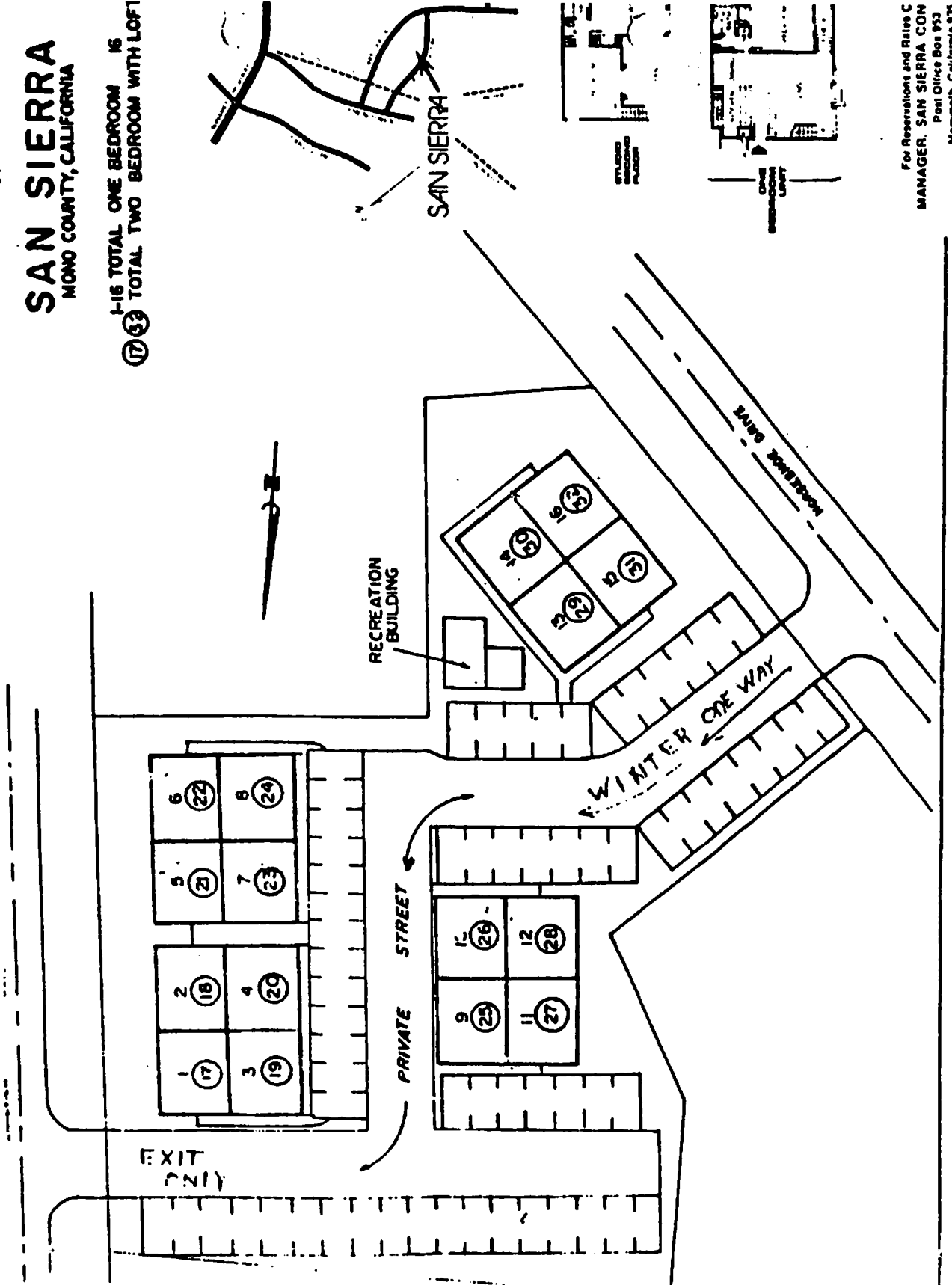


SAN SIERRA

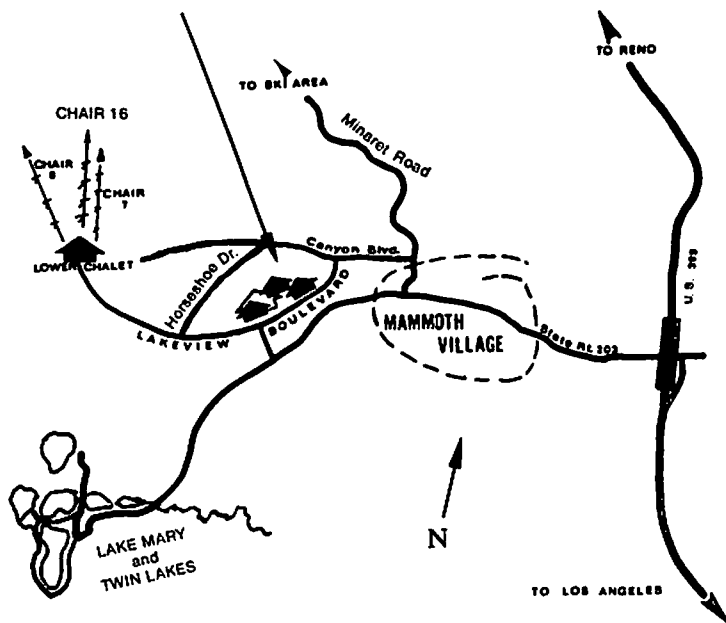
MONO COUNTY, CALIFORNIA

1-16 TOTAL ONE BEDROOM 16
17-33 TOTAL TWO BEDROOM WITH LOFT



For Reservations and Rates Contact
MANAGER, SAN SIERRA CON
Post Office Box 935
Mammoth, California 935
Telephone (714) 934-87

SAN SIERRA CONDOMINIUMS



FROM LOS ANGELES ON HWY 395 TO ROUTE 203 INTO MAMMOTH. RIGHT ON MINARET ROAD (INTERSECTION HAS STOPLIGHT). LEFT ON CANYON BLVD. THEN LEFT ON HORSESHOE DRIVE TO SAN SIERRA. — IN WINTER ENTER FROM HORSESHOE DRIVE AND EXIT TO LAKEVIEW BLVD.



MAMMOTH

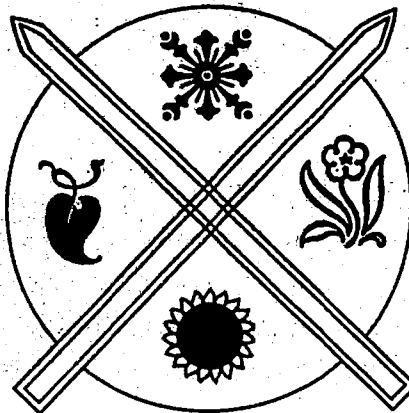
There are many sides to Mammoth . . . there is never an "off-season".

Skiing is why most people come to Mammoth . . . from October or November through May or June . . . one of the longest ski seasons in the world!

But snow melts . . . magically transforming the Eastern Sierra into a rainbow of dazzling colors, subtle shades and hues. A certain sense of rebirth fills the air.

An unending experience awaits everyone as you discover and enjoy Mammoth.

SAN SIERRA CONDOMINIUMS



TOLL FREE

800/824-8649

THE MOST CONVENIENT

RENTALS

IN MAMMOTH

FOR YEAR ROUND FUN

- WINTER** Skiing — Alpine & Nordic plus shuttle bus to lifts
- SPRING** Fishing, skiing, horseback riding, hiking, backpacking, boating, tennis
- SUMMER** Summer festival, fishing, horseback riding, hiking, backpacking, boating, tennis
- FALL** Fishing, hunting, horseback riding, hiking, backpacking, boating, tennis

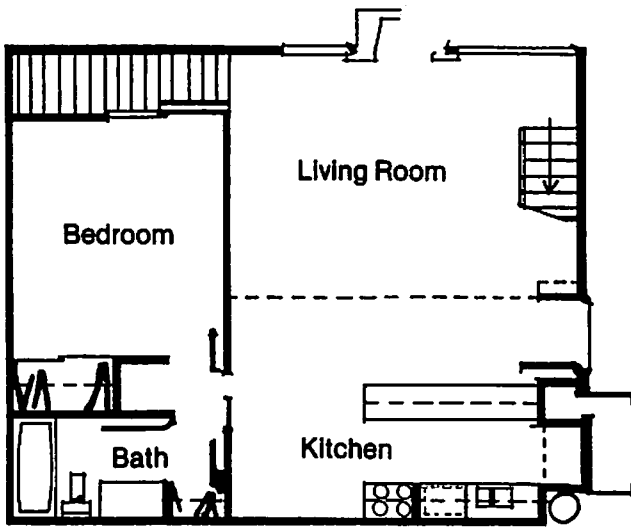


For Reservations and Rates Contact:
MANAGER, SAN SIERRA CONDOMINIUMS

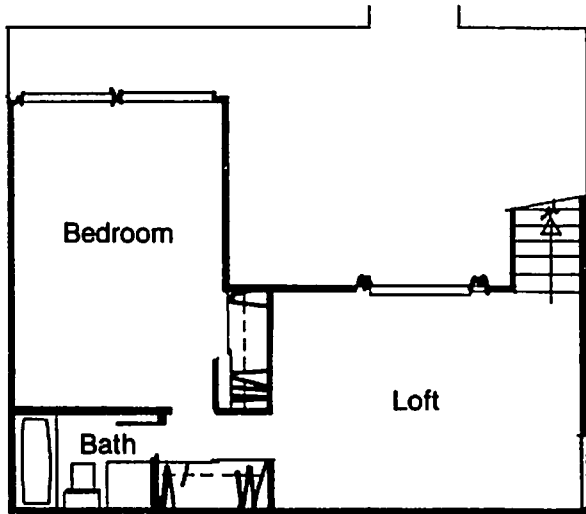
Post Office Box 953 — Mammoth, California 93546
 619/934-8264

TOLL FREE TELEPHONE: 800/824-8649

f



ABOVE — Typical 1 bedroom unit that can comfortably accommodate 4 to 6 persons.



ABOVE — Typical second floor in a 2 bedroom loft unit. The first floor is identical to the 1 bedroom unit shown at left. This 2 bedroom loft can accommodate 6 to 10 persons comfortably.

SAN SIERRA OFFERS:

- ★ One and two bedroom/loft units accommodating up to 10 people
- ★ Spacious livingroom with wood burning fireplaces
- ★ Towels and linens provided
- ★ Fully equipped electric kitchen, Includes:
 - Tableware
 - Dishes
 - Cooking Utensils
 - Dishwasher
 - Disposal
- ★ Cable TV for superior picture quality
- ★ Ample storage and closet space
- ★ Exterior ski closet
- ★ Large Indoor Jacuzzi and sauna
- ★ Complete laundry facilities on premises
- ★ Walking distance or shuttle bus to ski lifts
- ★ Easy walk to:
 - Ski Shops
 - Restaurants
 - Entertainment
 - Bait and Tackle Shops
 - Public Tennis Courts