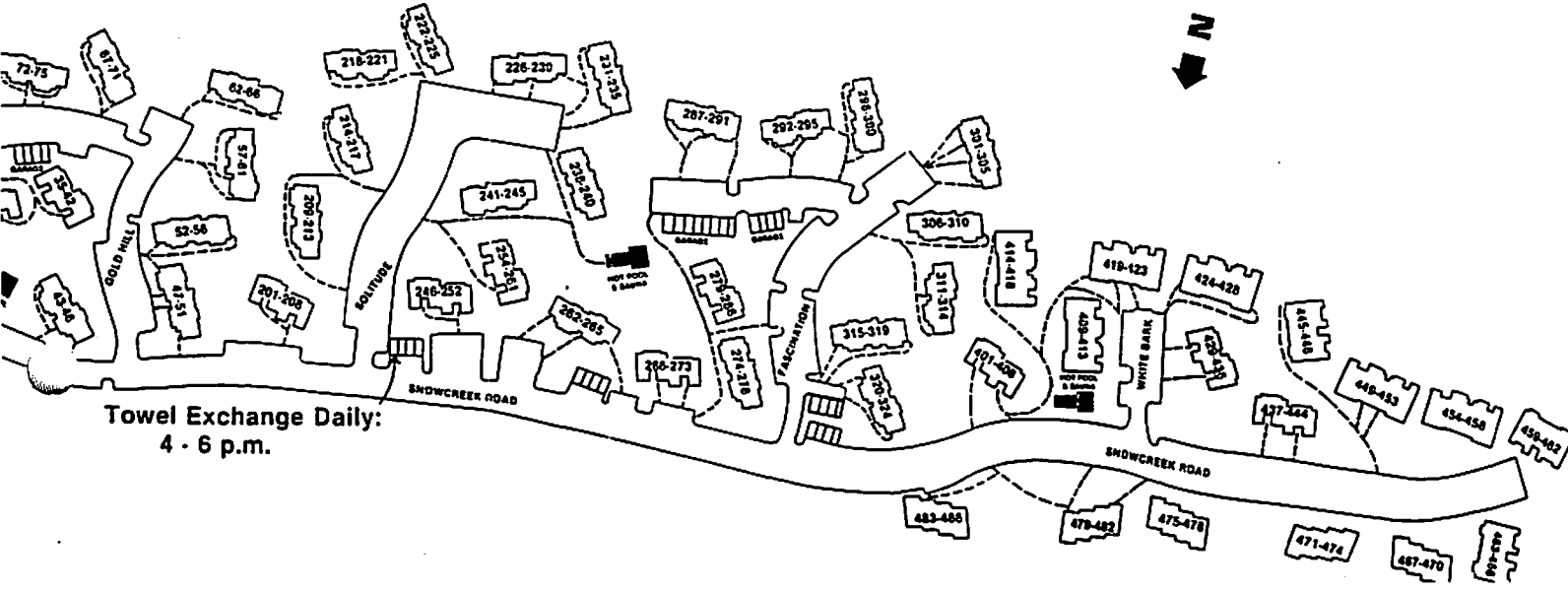


S VCREEK SORT

Snowcreek Athletic Club

Snowcreek Property Management Office

Snowcreek Sales & Information Office

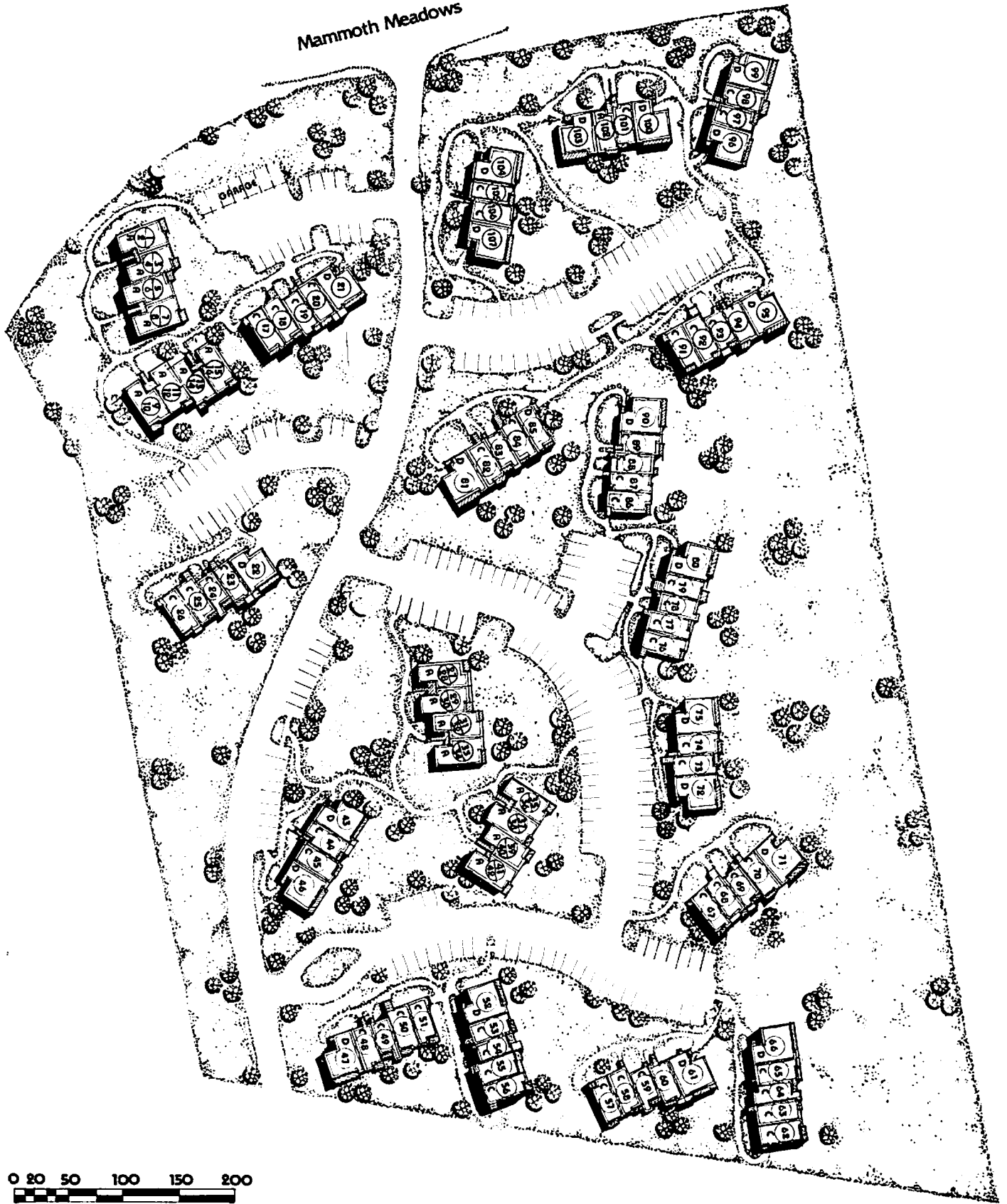


Towel Exchange Daily:
4 - 6 p.m.

S

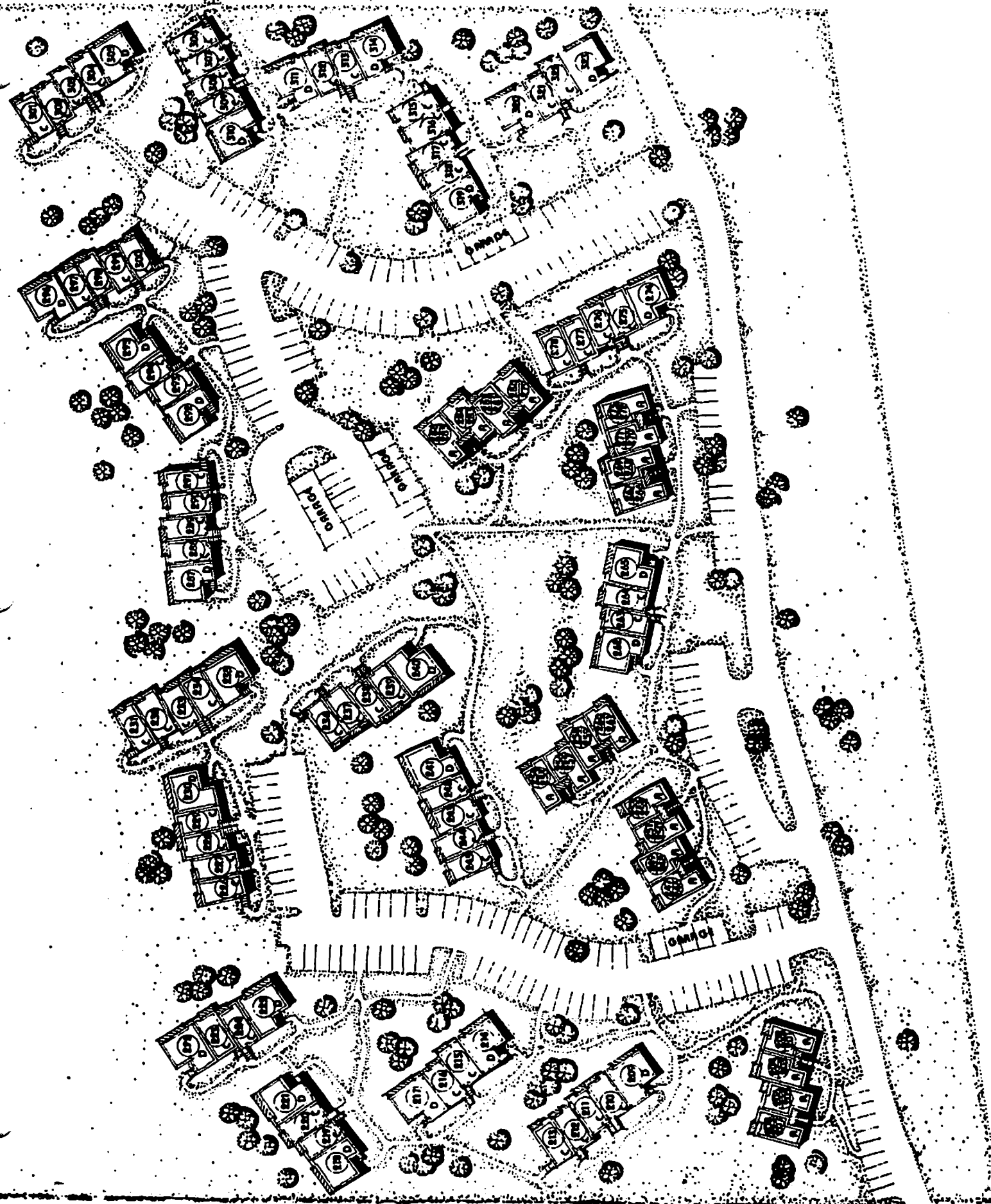
Site Plan

Mammoth Meadows

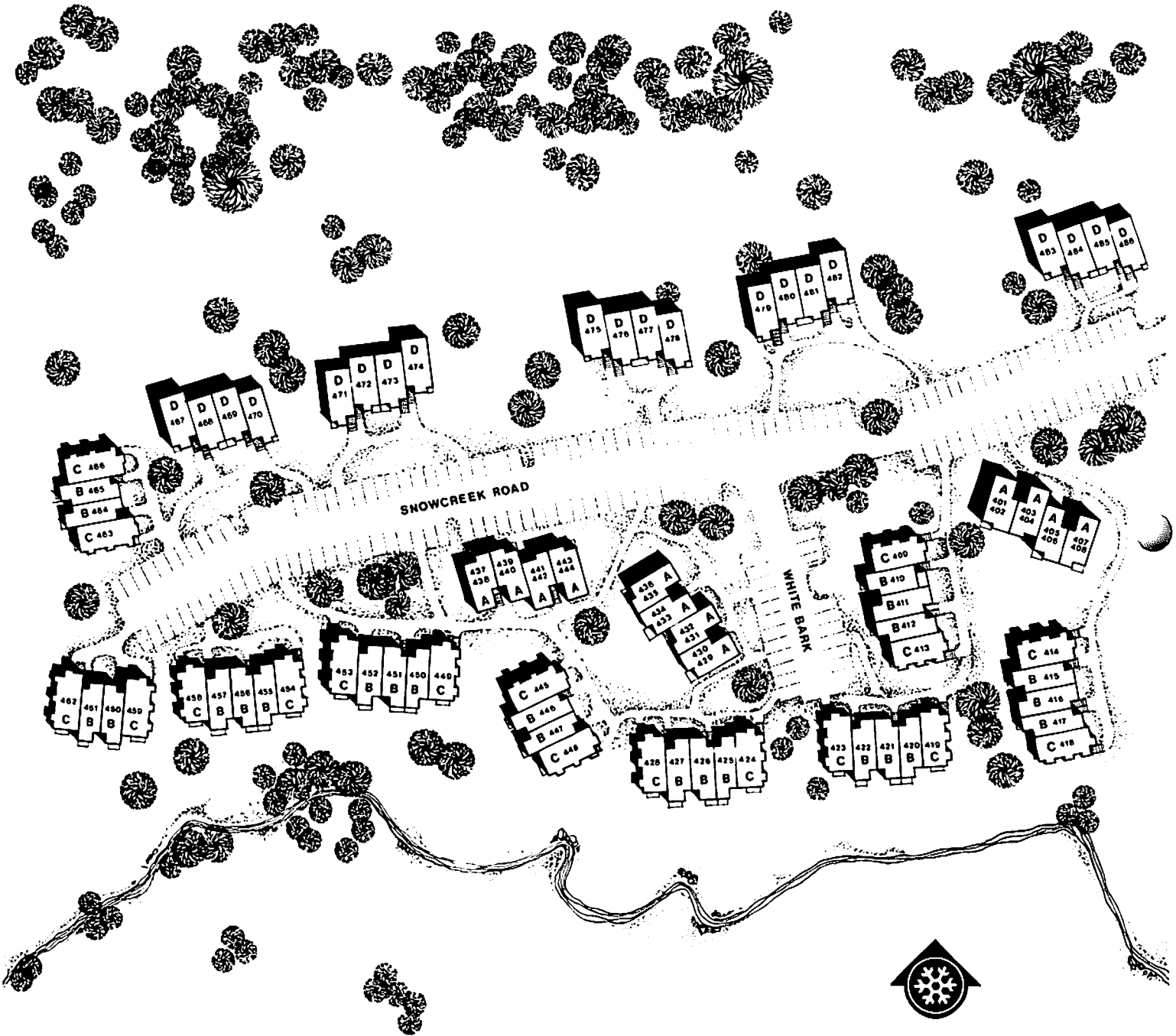


5

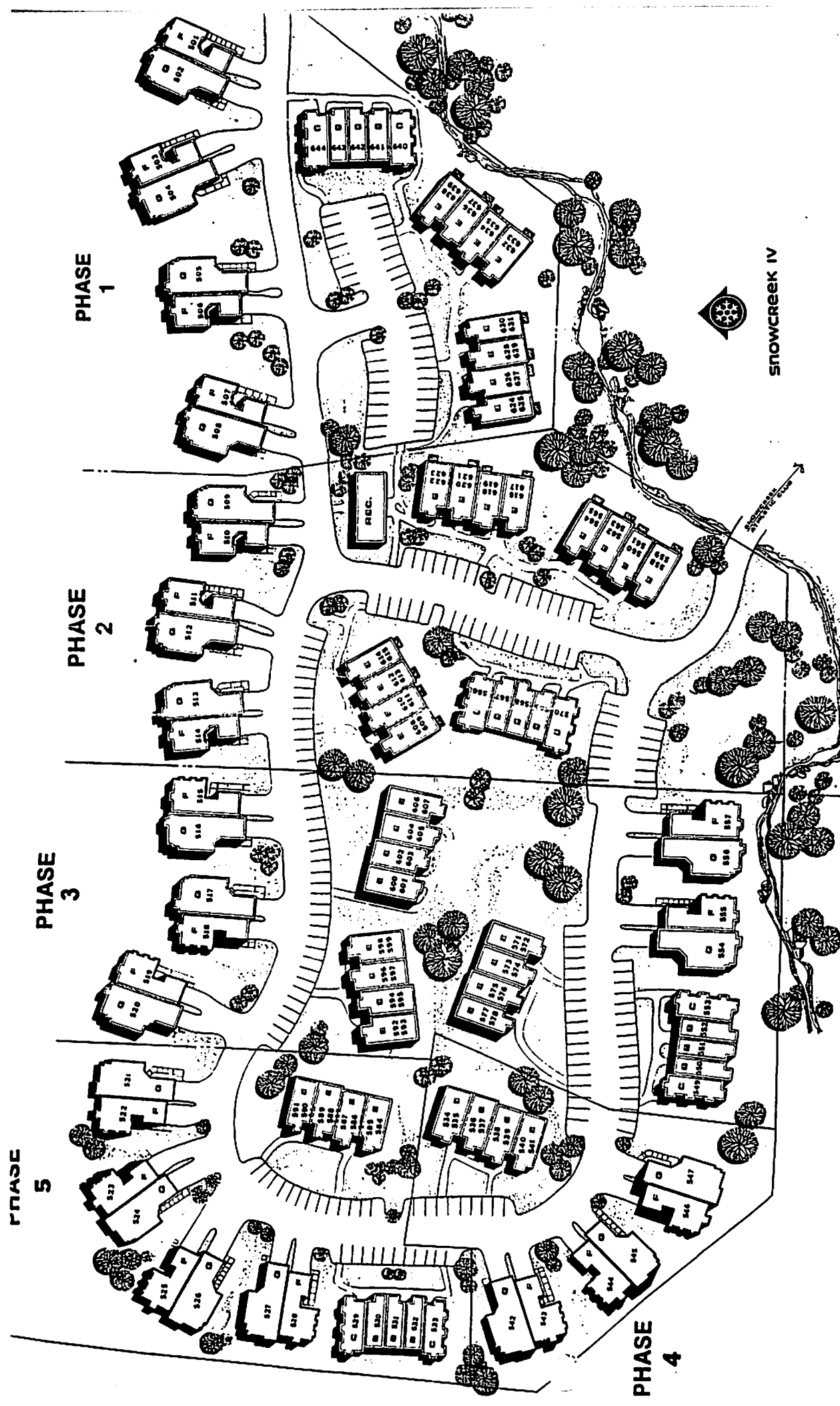
SITE PLAN II



PLOT PLAN



SNOWCREEK III



PHASE 1

PHASE 2

PHASE 3

PHASE 5

PHASE 4



SNOWCREEK IV

PROPERTY LINE

What are the common area fees?

Common area fees vary by size and phase ranging from \$265 to \$475.

What do the common area fees cover?

Water, trash, sewer, snow removal, landscaping, Jacuzzis, insurance on the structure, reserves for the maintenance of the buildings and management.

Do Snowcreek Owner's received privileges to the Athletic Club and Golf Course?

If you purchase a new Snowcreek unit you receive a complimentary membership to the Athletic Club and Golf Course for a limited agreed upon term. The Athletic Club and Golf Course are owned by the developer and not supported in any way by the homeowner's association dues. Memberships are available for purchase.

Snowcreek Property Management

Snowcreek Property Management (SPM) currently handles over 200 Snowcreek Resort vacation rentals throughout the Resort, with the highest concentration in Snowcreek Fairway Homes (Phase V). We are the common area property managers for Fairway Homes ONLY.

Guest that rent through SPM receive complimentary use of the Athletic Club, and discounted green fees/preferred tee times at Snowcreek Golf Course. These privileges are also extended to homeowners on the SPM rental program. These privileges are NOT available through other rental agencies.

Snowcreek Athletic Club

What does your club offer?

1 Squash Court	TV/Game Room, Pool Table and Ping Pong Table
4 Racquet Ball Courts	Ballet Studio
Yoga Studio	2 Pools (Indoor and Outdoor)
Basketball Gym	Volley Ball Courts (Indoor and Outdoor)
9 Tennis Courts	Personal Training
3 Weight Rooms	Exercise Classes (KickBox, CycleFit, Stretch, Just to name a few)
1 Large Cardio Room	Message (by appointment)
3 Hot Tubs	

Snowcreek Golf Course

When did the Golf Course Open?

It opened in July of 1991 as a public, resort golf course.

What is the playing season?

Average playing season runs from mid-May through the end of October, weather permitting.

Snowcreek Resort General Information

General

How big is Snowcreek Resort?

355 acres and is surrounded by 1.3 million acres of Forest Service open space.

How many units are there and when were they built?

At present there are 755 units in Phase I through V. The breakdown by phase is as follows:

Phase I: #1 – 107 (107 units) begun in 1979,

Phase II: #201 – 323 (123 units) begun in 1981

Phase III: #401 – 486 (86 units) begun in 1983

Phase IV: #501 – 644 (143 units) begun in 1986

Phase V: (Fairway Homes I and II) #700 – 1007 (296) units begun in 1989

What size units can be found at Snowcreek Resort?

Phase I, II, & III:	One bedroom One bedroom + loft Two bedroom + loft Three bedroom + loft
Phase IV:	Two bedroom Two bedroom + loft Three bedroom + loft Three & four bedroom + garage duplex
Phase V:	Two bedroom Two bedroom + garage Two bedroom + loft Three bedroom + garage Three & four bedroom + garage duplex Four bedroom + den + garage duplex

Why should you buy a Snowcreek unit?

Snowcreek is the premiere property in Mammoth. The quality of construction is unsurpassed as are the view-oriented locations. The rental program is also the best in town.

Does Snowcreek Realty sell only new Snowcreek units?

No, Snowcreek Realty is a full service real estate office and is a member of the local real estate board and multiple listing service. All of our agents are knowledgeable about the current listings in Mono County, from Mammoth to Paradise, and provide professional, efficient, unparalleled service. We also seek listings both inside and outside of Snowcreek including lots, condos, home and businesses.

S N O W C R E E K R E S O R T

Jodi Melton ♦ Snowcreek Realty
(800) 545-4499 or (760) 937-5984

Snowcreek Golf Course

Can you describe the course for me?

A great resort course for the entry-level player, yet very challenging for the advanced golfer.

A regulation golf course, par 35, playing 3300 yards from the back tees.

4 tee boxes offered.

Greens:

Penn Bent grass-great greens, speedy and a great roll.

Fairways and Tees:

Mixture of blue and rye grass.

Putting Green:

Outside the Club House (available to the public for practice).

Chipping Green:

Located down Fairway Drive across from the #1 green (available to the public for practice).

Course Designer: Ted Robinson

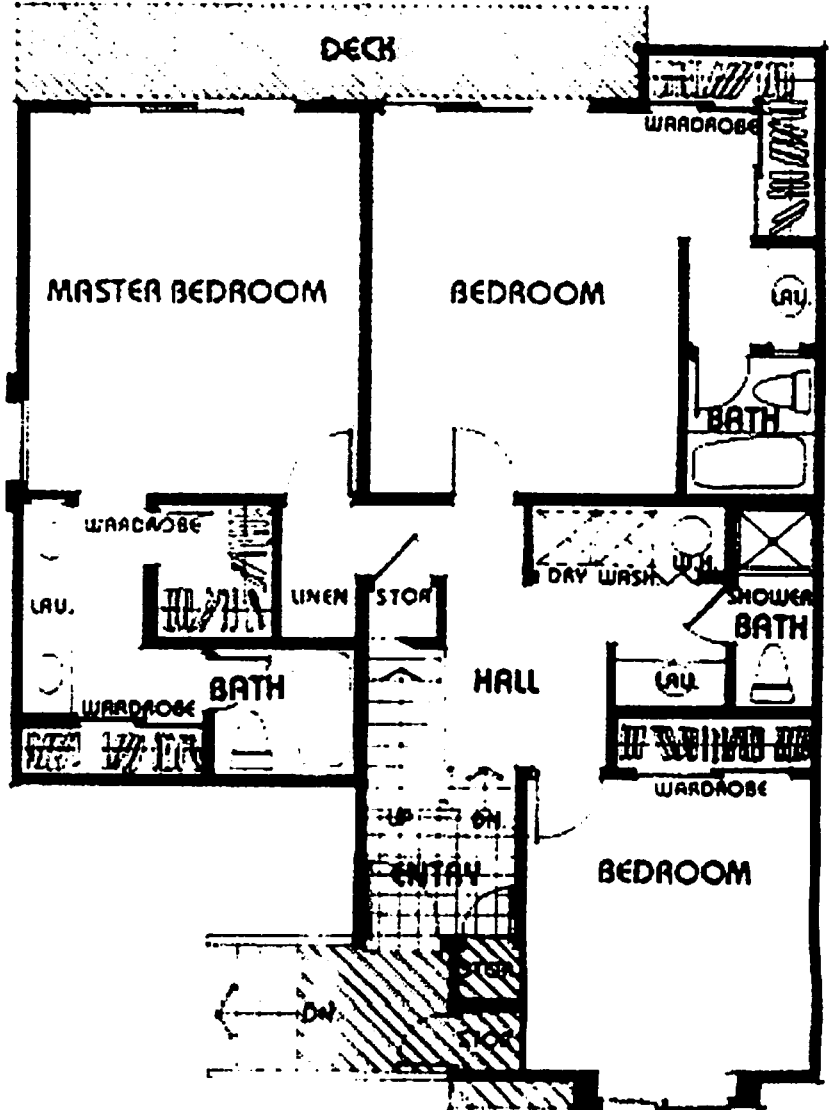
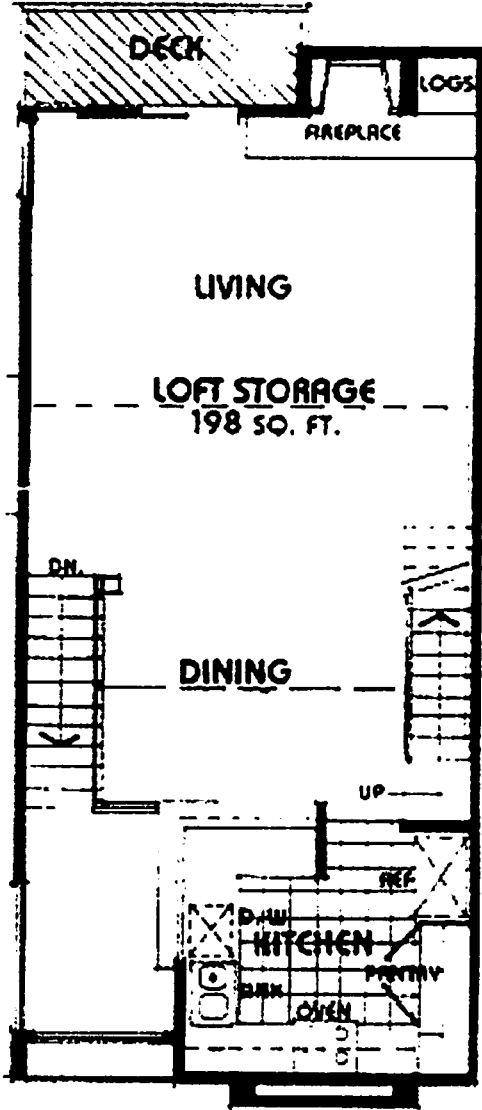
What is the status of the next 9 holes of the Golf Course?

The "Agreement to Initiate" has been signed between the Forest Service and Dempsey Construction, which authorizes work on the final stages of the land trade. The Forest Service has indicated they should have a sufficient amount of their work completed by November of 2002. In order for Dempsey Construction to start work in the Spring of 2003, the Town of Mammoth Lakes needs six months lead time to complete the planning process approval.

Snowcreek Phase 1 & 2 (end)
3 Bedrooms + Loft / 3 Bathrooms
Square Feet – 1861

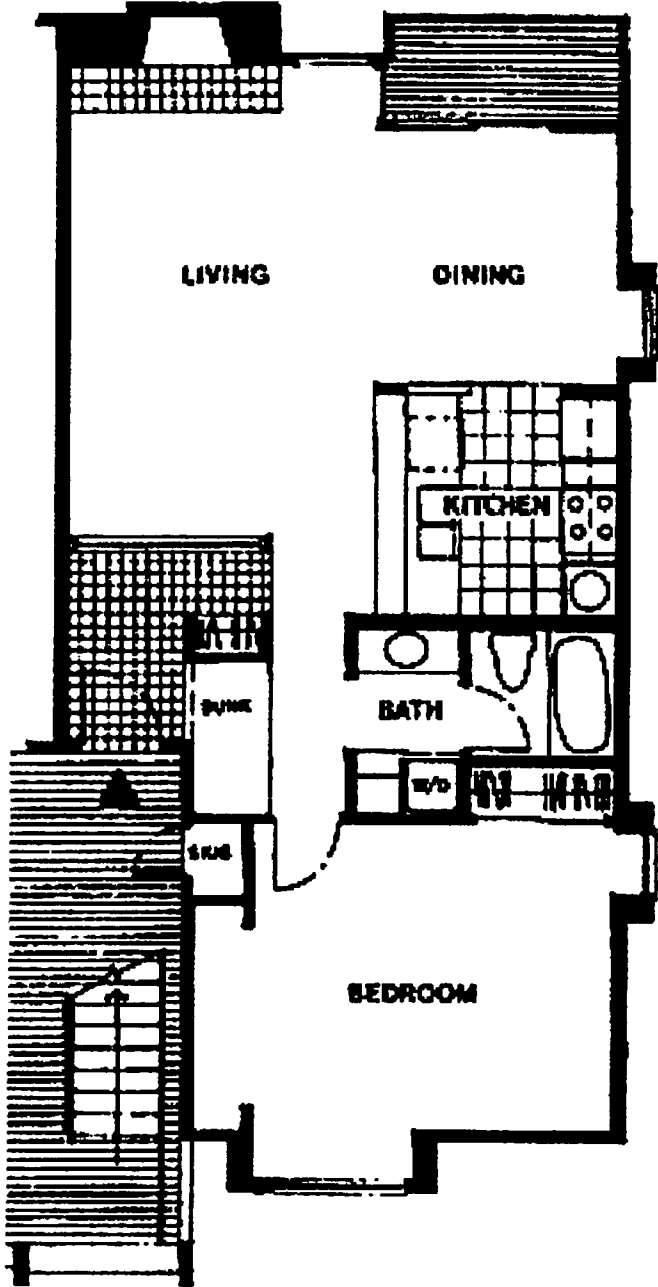
Plan D - End

3 Bedroom + Loft



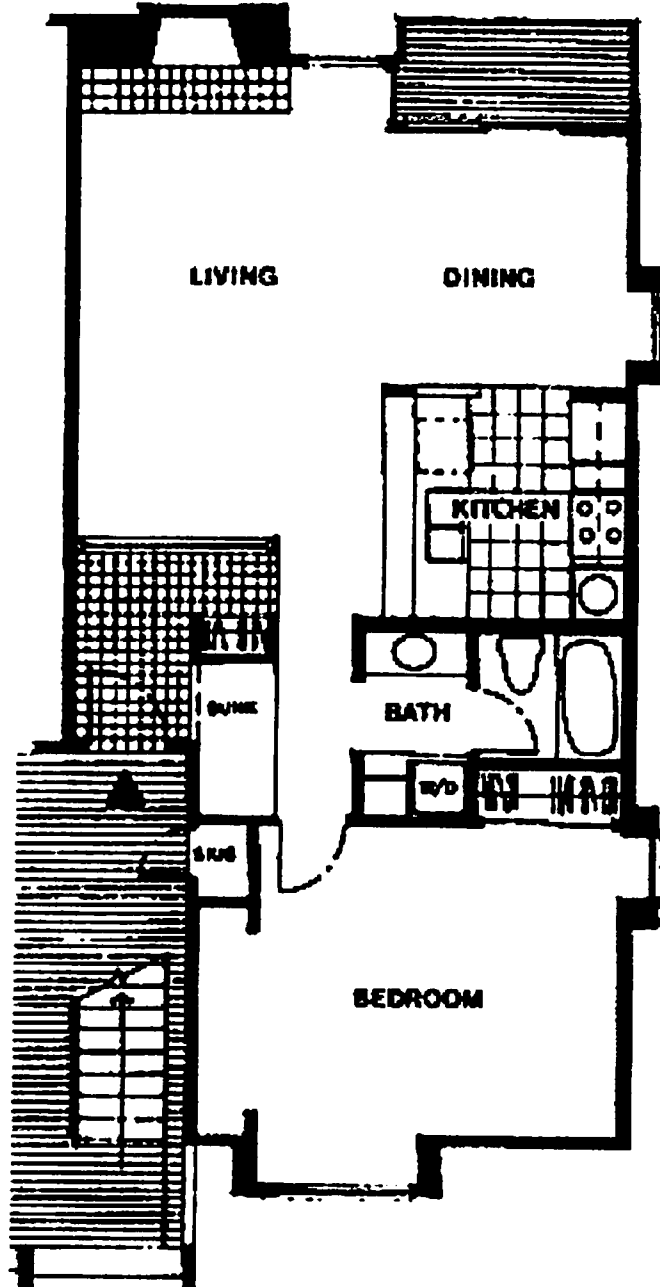
Snowcreek Phases 1, 2 & 3
1 Bedroom / 1 Bathroom
Square Feet - 823

Plan A



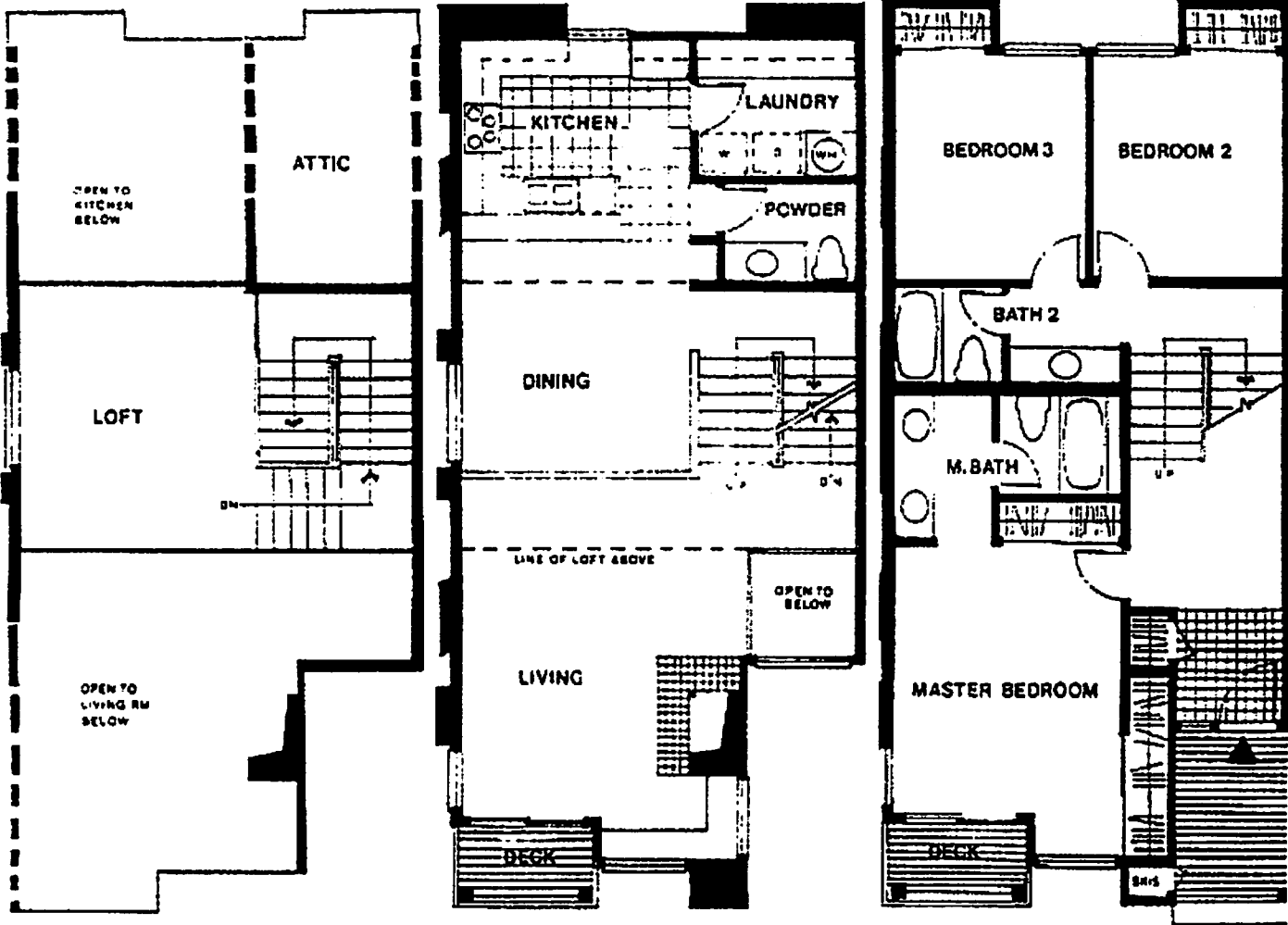
Snowcreek Phases 1, 2 & 3
1 Bedroom + loft / 1 Bathroom
Square Feet – 900
(Modified 1000)

Plan A+Loft



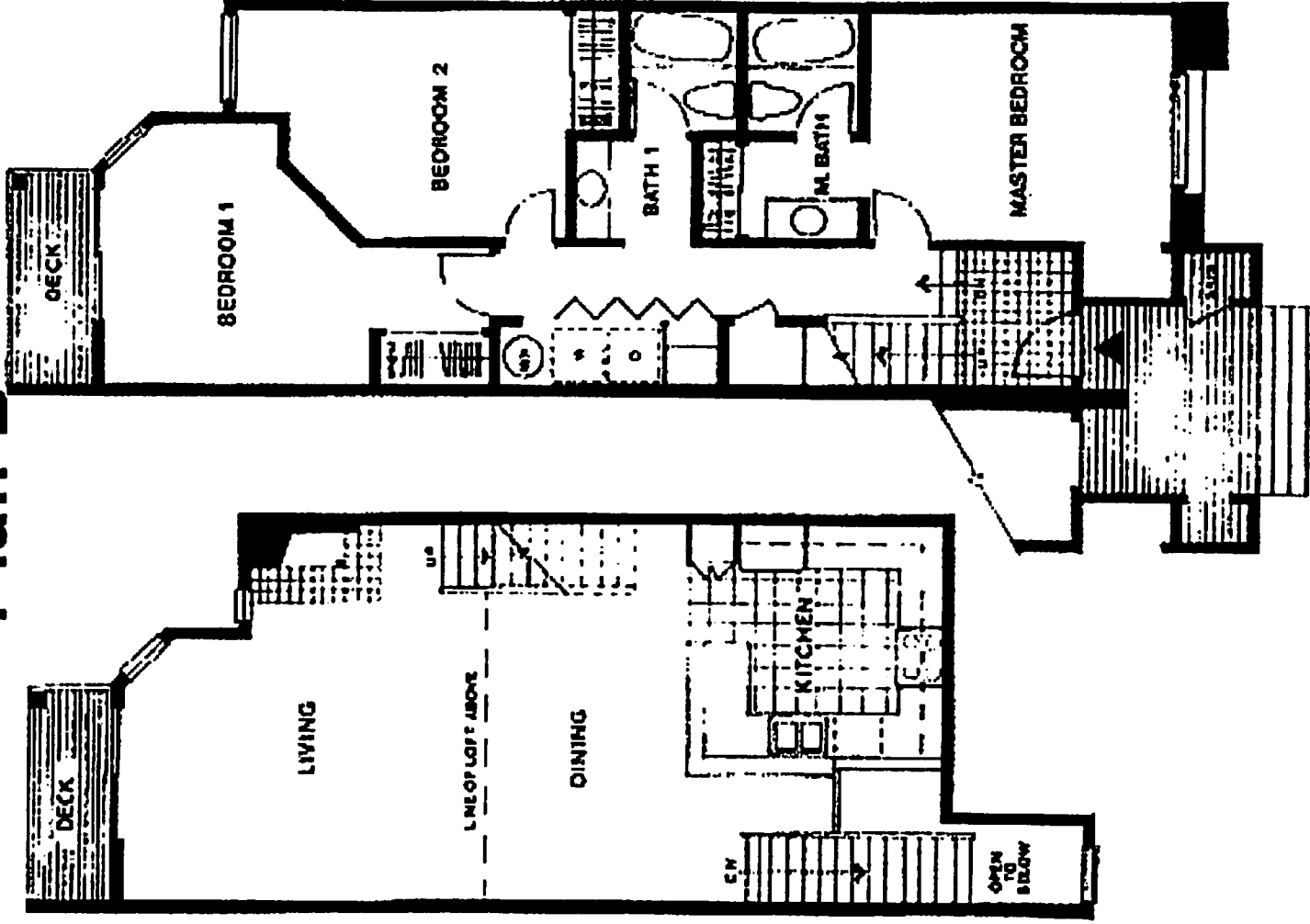
Snowcreek Phase 3 (hillside 467 -486)
3 Bedrooms + Loft / 2 1/2 Bathrooms
Square Feet – 1770

Plan D
Hillside



Snowcreek Phase 3 & 4 (interior)
3 Bedrooms + Loft / 2 Bathrooms
Square Feet – 1633

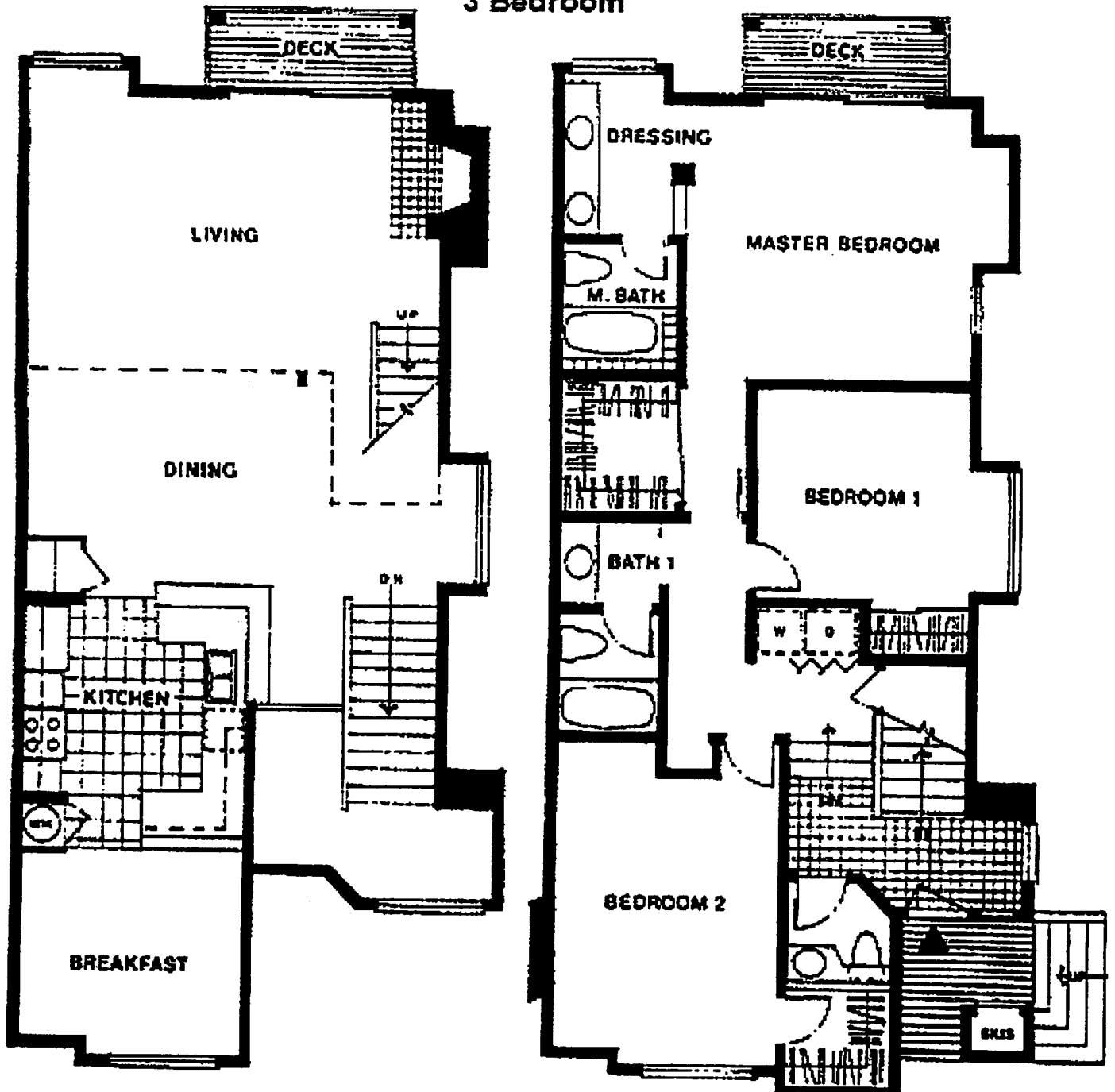
Plan B



Snowcreek Phase 3 & 4 (end)
3 Bedrooms + Loft / 2 1/2 Bathrooms
Square Feet – 2111

Plan C

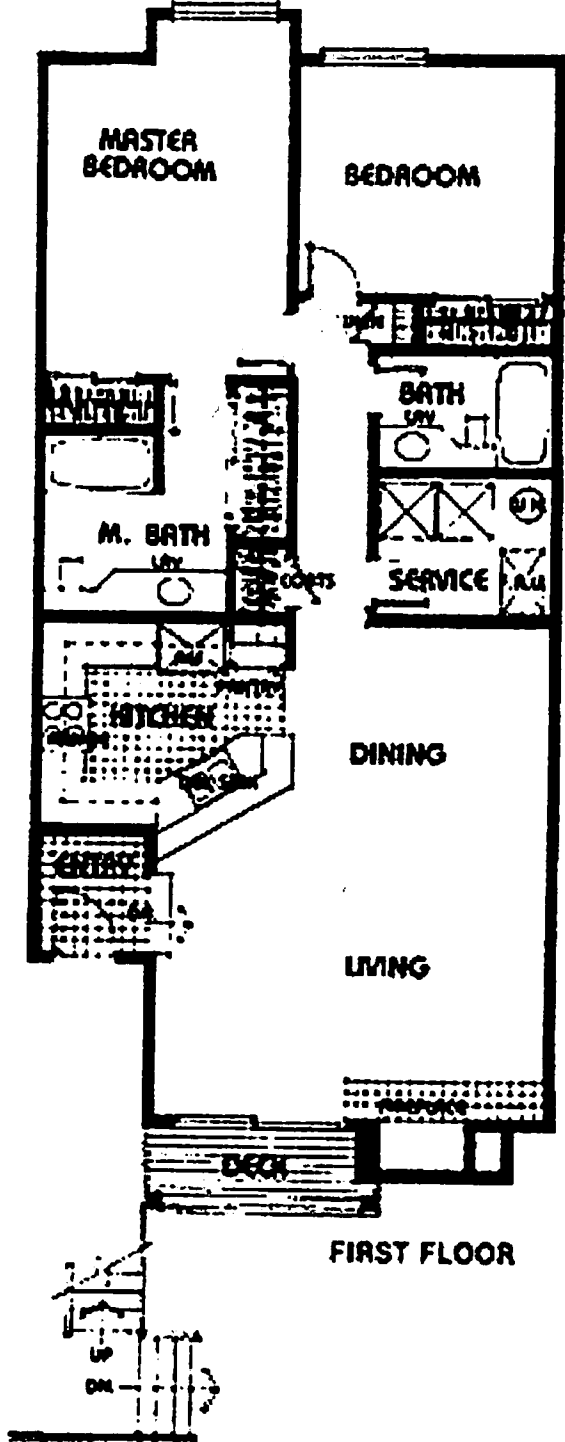
3 Bedroom



Snowcreek Phase 4
2 Bedroom / 2 Bathrooms
Square Feet – 1149

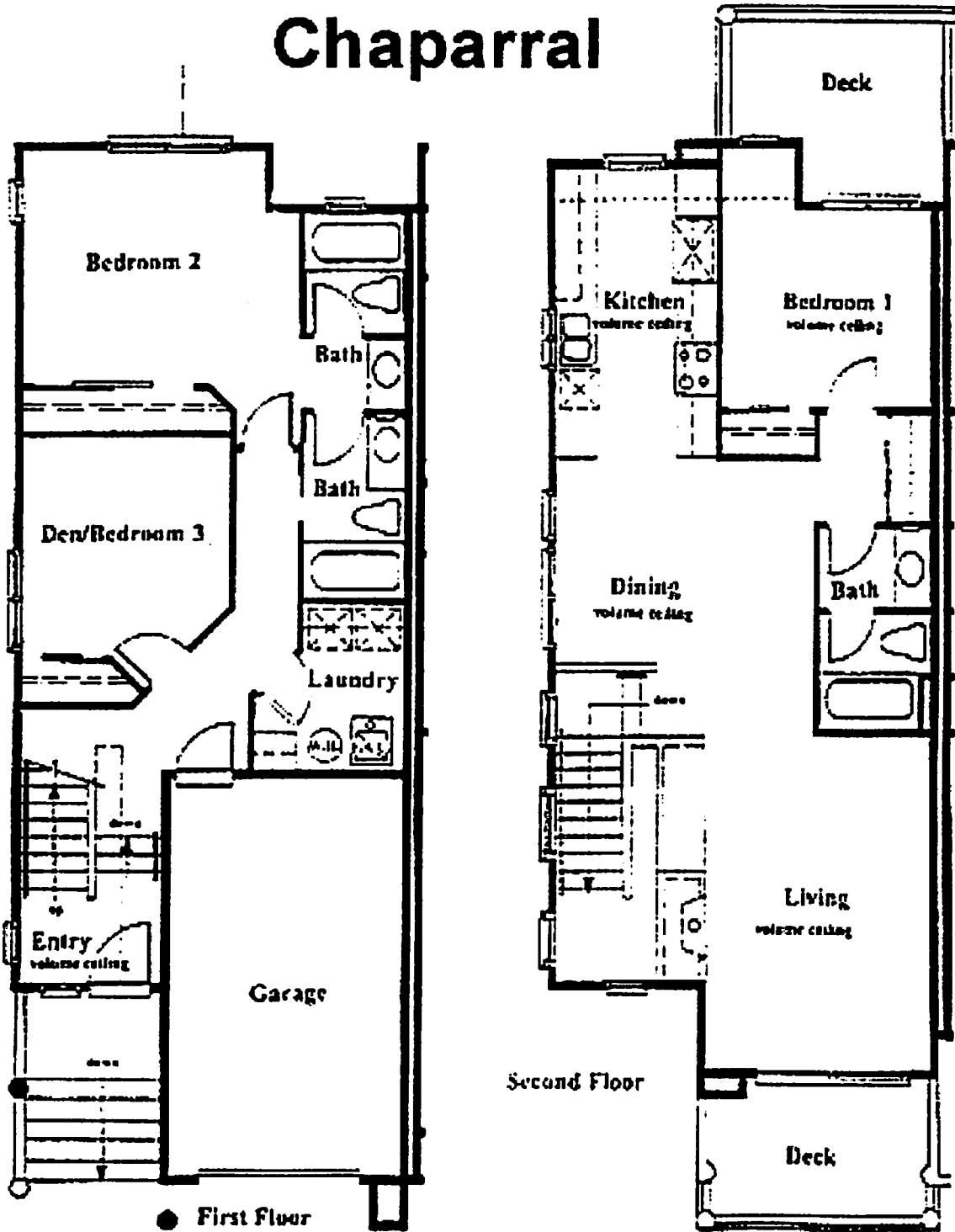
Plan E

[Down stairs unit]

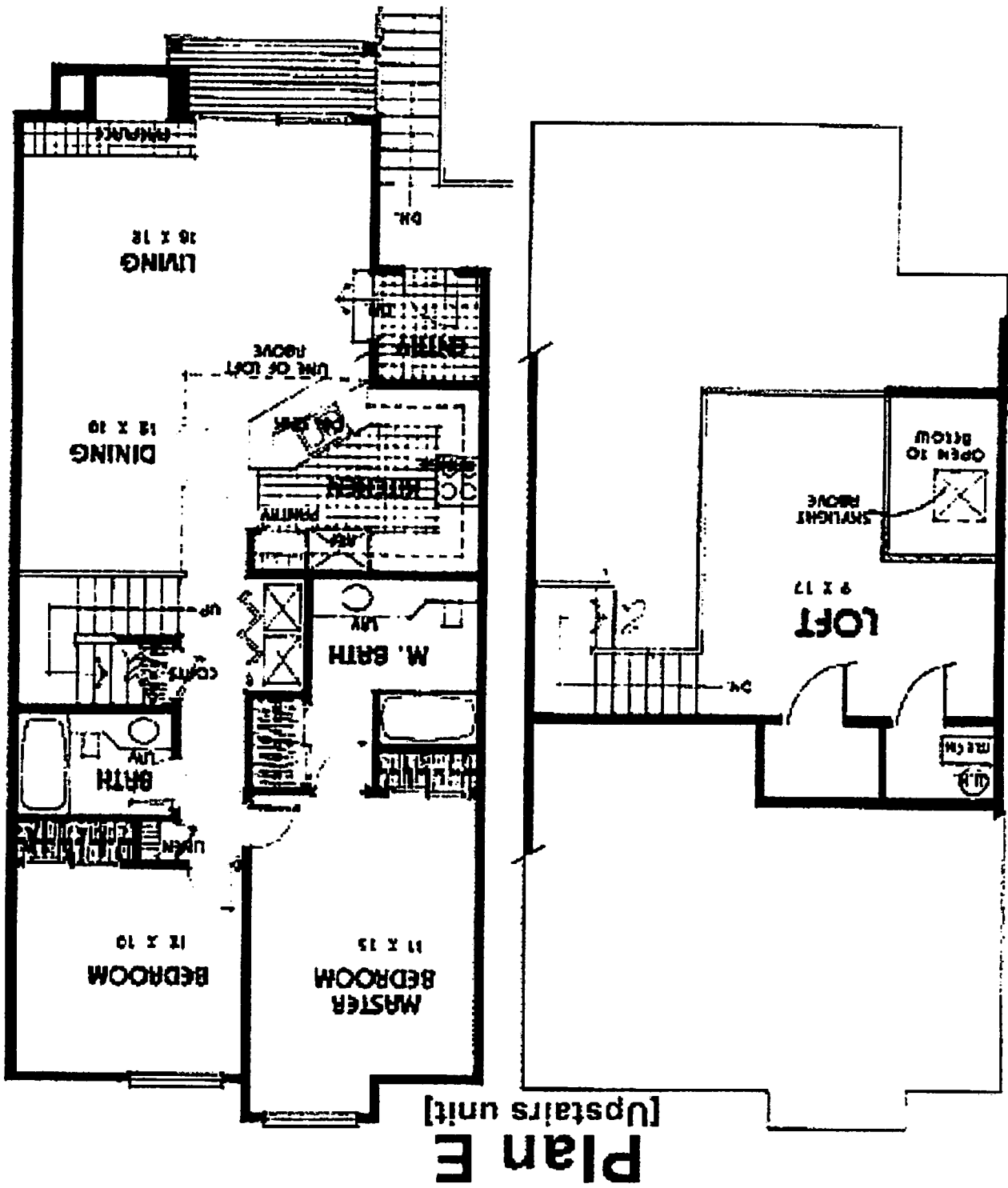


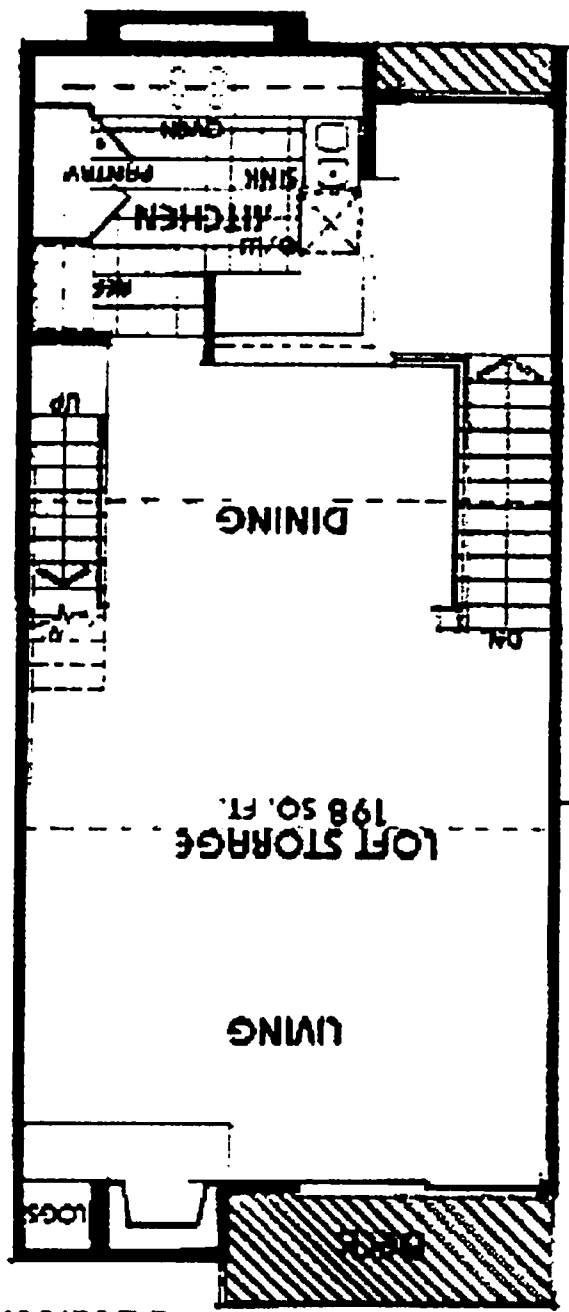
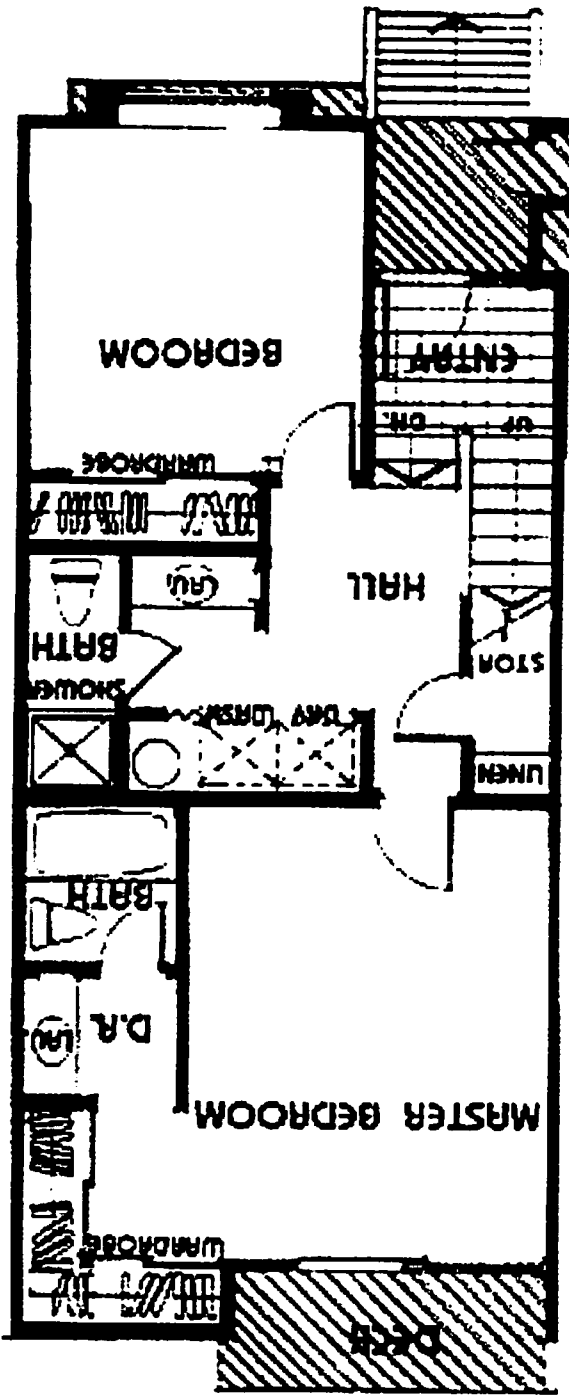
Snowcreek Phase 4 - Townhome
3 Bedrooms / 3 Bathrooms
Square Feet - 1457

Chaparral



Snowcreek Phase 4
 2 Bedrooms + Loft / 2 Bathrooms
 Square Feet - 1484



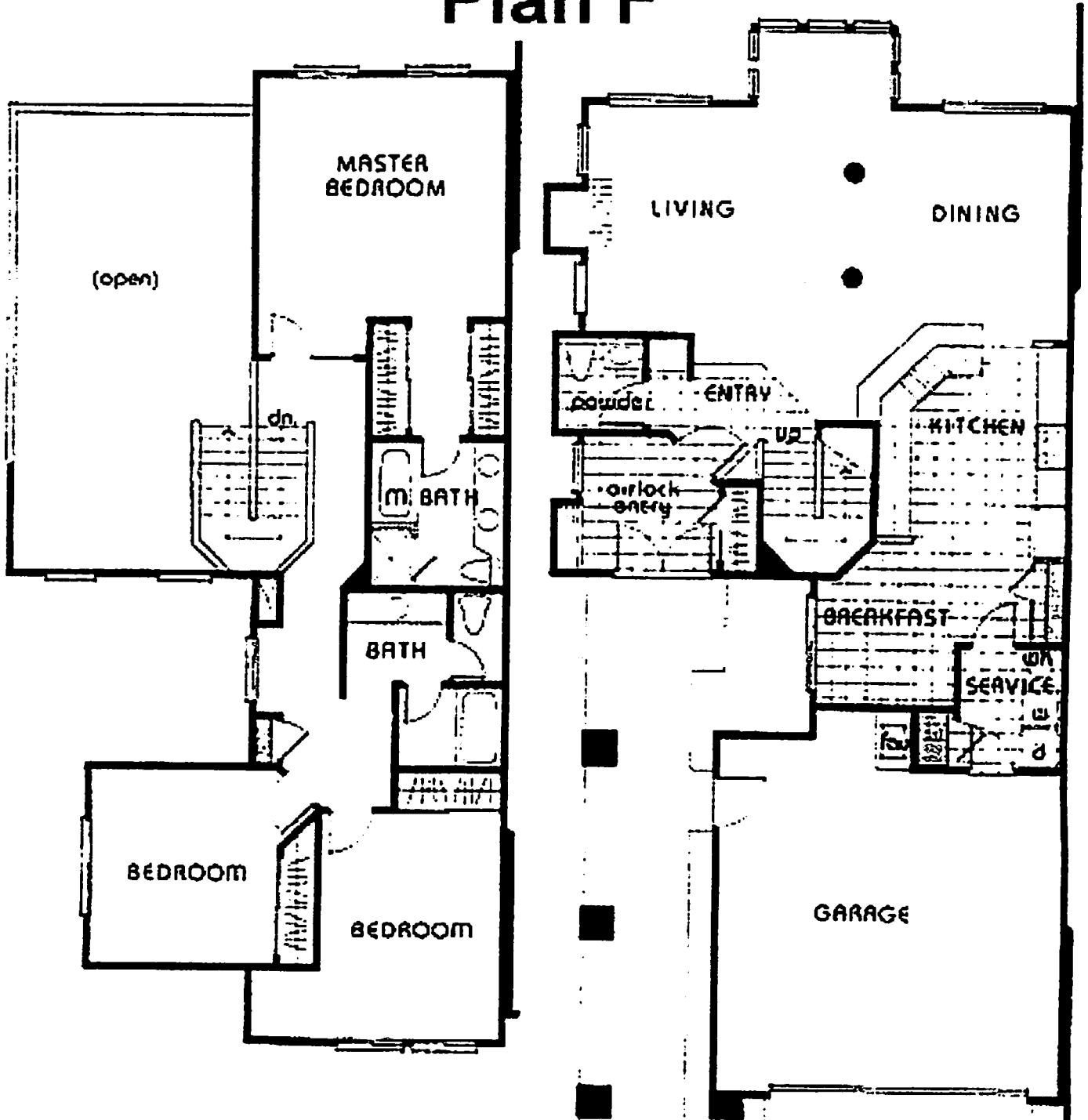


Plan C
2 Bedroom

Snowcreek Phases 1 & 2
2 Bedrooms + Loft / 2 Bathrooms
Square Feet - 1483

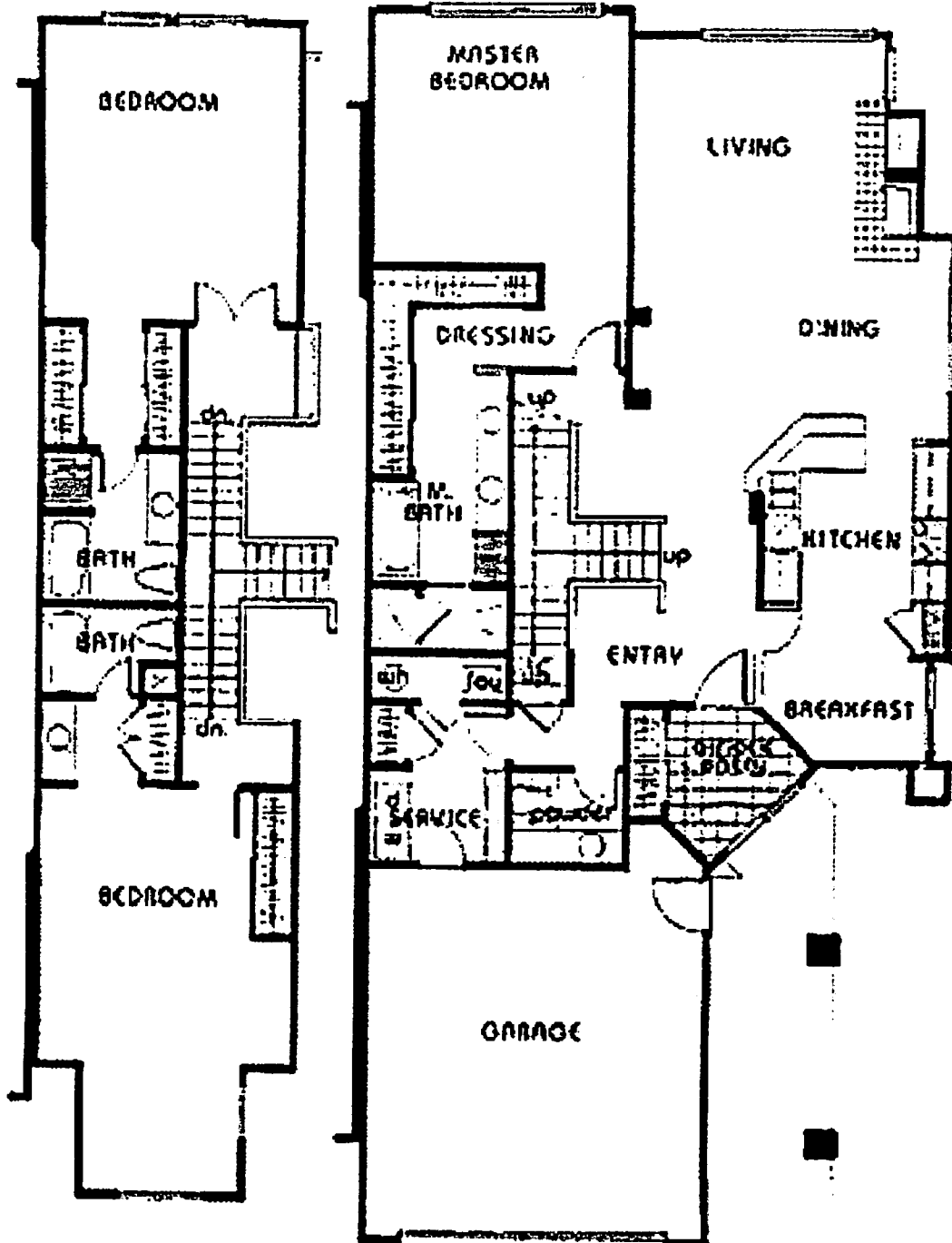
Snowcreek Phase 4 - Townhome
3 Bedrooms / 2 1/2 Bathrooms
Square Feet - 2200

Plan F



Snowcreek Phase 4 - Townhome
3 Bedrooms / 3 1/2 Bathrooms
Square Feet - 2532

Plan G



Snowcreek Phase 4 - Townhome
4 Bedrooms / 3 1/2 Bathrooms
Square Feet - 2379

Plan F II

4 Bedroom

