



S O L S T I C E

CLOSE ENOUGH YET WORLDS AWAY.

# SIERRA STAR MASTERPLAN

Sierra Star is one of the most coveted neighborhoods in Mammoth, particularly among golf enthusiasts. This 18-hole, championship golf course community is moments away from the award-winning Village at Mammoth and the slopes of Mammoth Mountain. Tucked away, yet in the heart of Mammoth, Sierra Star is a playground in itself - a resort within a resort. It's also where you find Solstice, one of Mammoth's most rare and distinct townhome developments.



Plan is diagrammatic and does not necessarily reflect exact locations of proposed roads, trails, buildings or amenities.

A HOME INSPIRED BY THE OPEN SPACE AND BEAUTY THAT SURROUNDS IT.

Tasteful and refined, the architecture of Solstice pays tribute to the mountains and landscape that surround it. Large rooms, tall windows and high ceilings provide a remarkable sense of freedom and space within. The clean lines, sleek design, impeccable detailing and comforting amenities elevate this mountain home to a truly contemporary level of living. It's rare to find a home that so deftly bridges the gap between nature's simplicity and contemporary lifestyles.



*y o u r h o m e - o n e o f t h r e e p r o p o s e d c o l o r s c h e m e s*

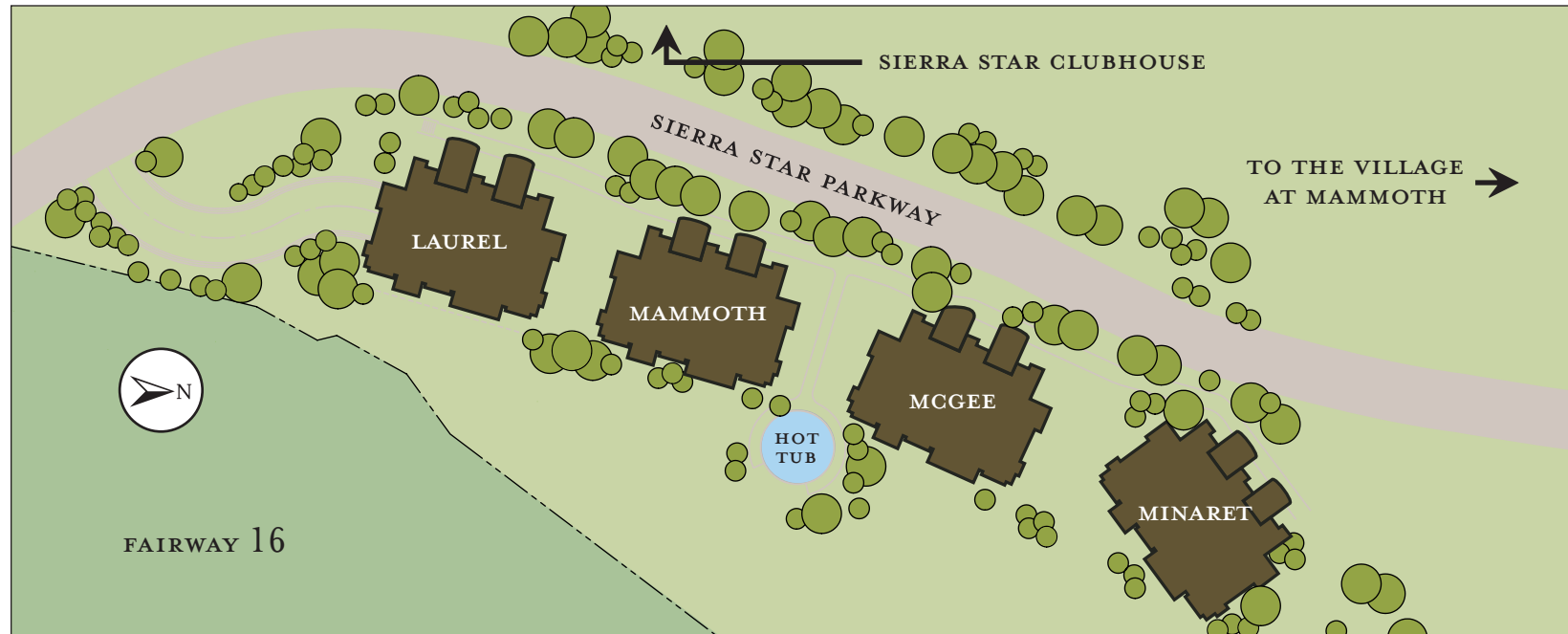


This is an artist's rendering of a proposed project that Need Not Be Built. The developer reserves the right to make modifications.

## EXCITEMENT OR PRIVACY, IT'S ALL RIGHT HERE.

From your home on the 16th fairway of the Sierra Star Golf Course, you have it all.

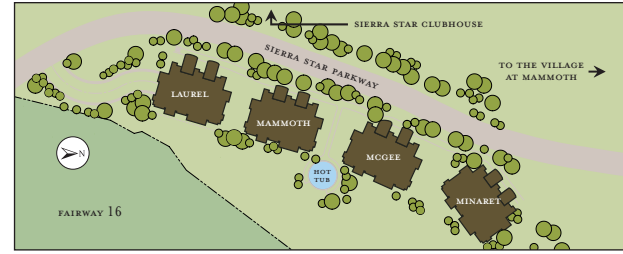
- \* Moments from the award-winning Village at Mammoth, Juniper Springs Neighborhood, and other Mammoth Lakes amenities.
- \* In the heart of Sierra Star, the planned resort within a resort.
- \* Adjacent to proposed bike and pedestrian path.



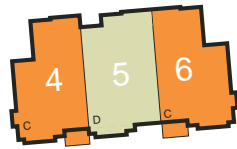
Solstice is a proposed project that Need Not Be Built. The developer reserves the right to make modifications.



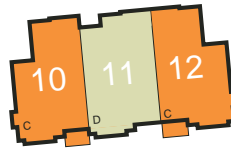
*floor plates*



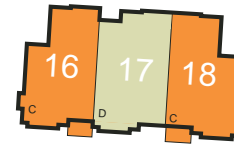
**3 BEDROOM  
HOMES**



**LAUREL**



**MAMMOTH**

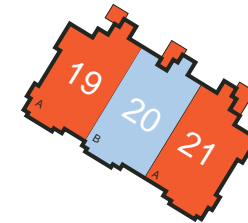
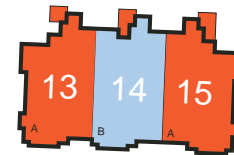
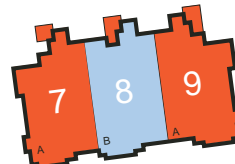
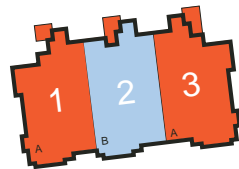


**MCGEE**



**MINARET**

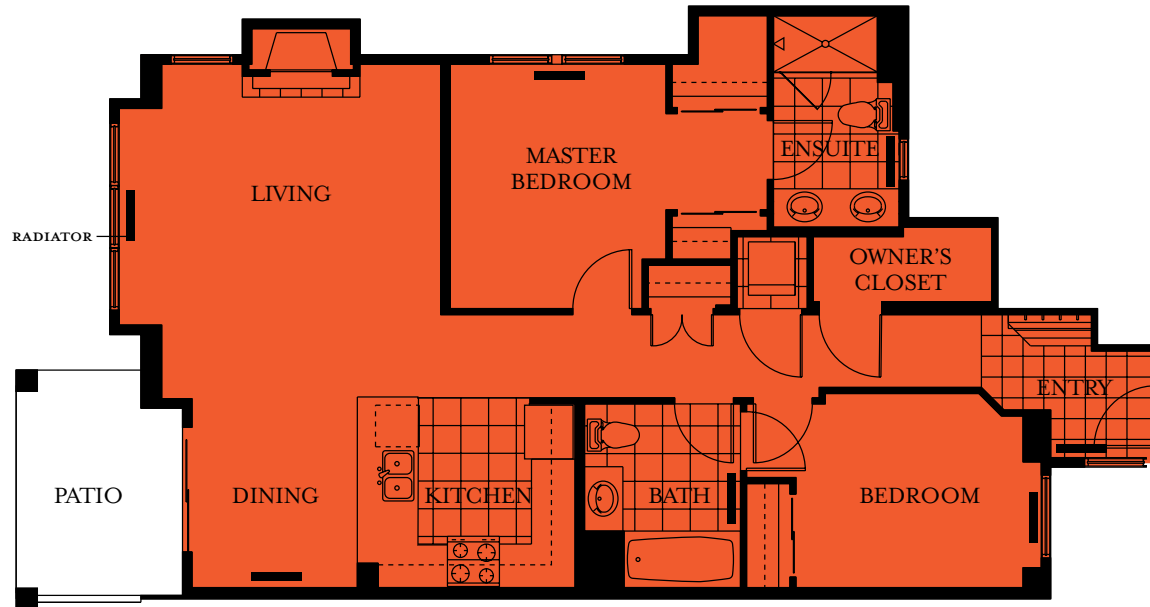
**2 BEDROOM  
HOMES**



- PLAN A ~ 1,144 SQ. FT.
- PLAN B ~ 1,160 SQ. FT.
- PLAN C ~ 1,525 SQ. FT.
- PLAN D ~ 1,725 SQ. FT.

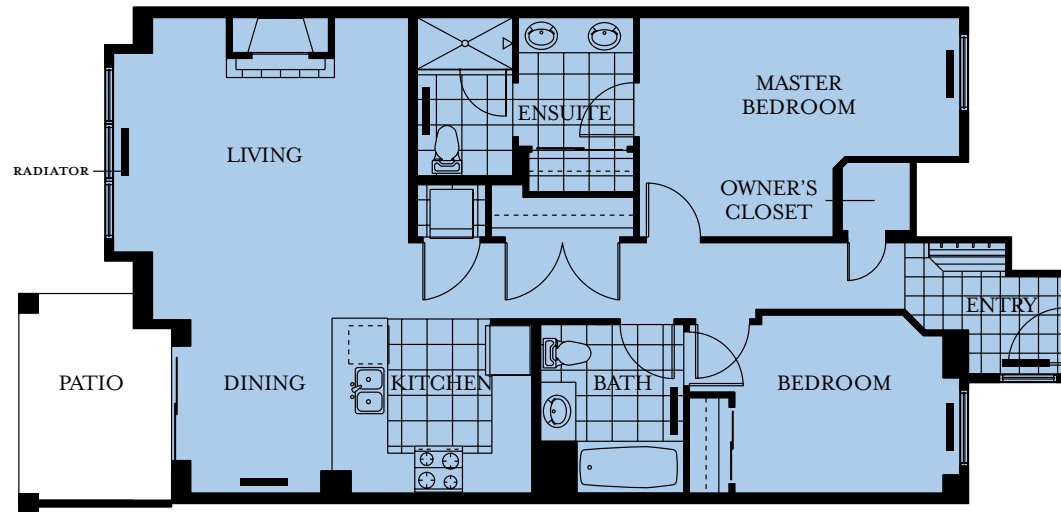
The developer reserves the right to make modifications. All dimensions and areas shown on this plan are not to scale.  
"As built" dimensions and areas may vary from those shown.

PLAN A  
2 BEDROOM FIRST FLOOR  
1,144 SQ FT



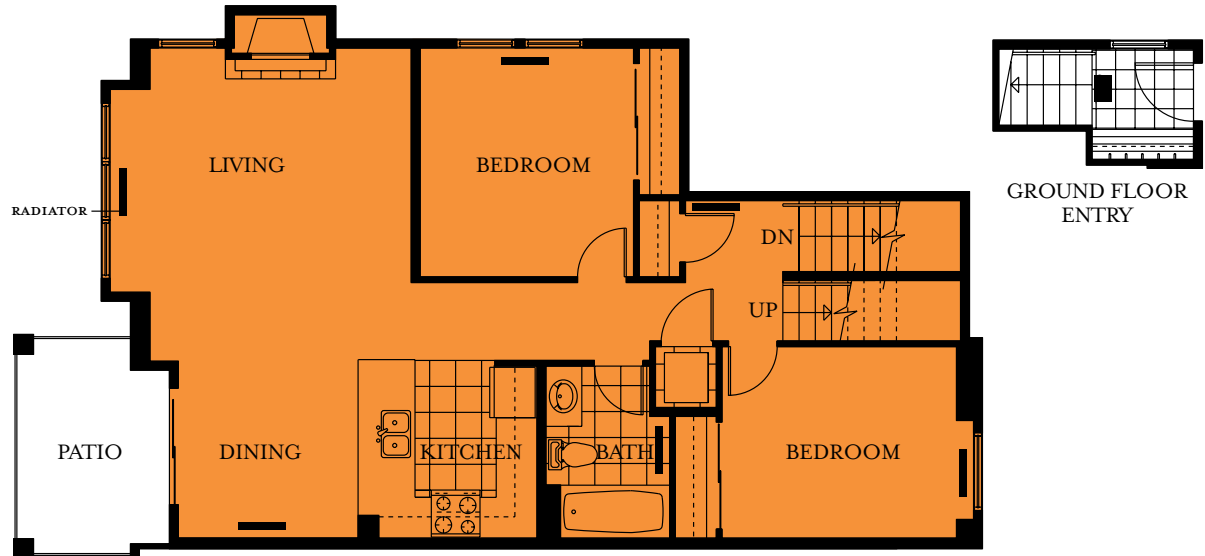
The developer reserves the right to make modifications. All dimensions and areas shown on this plan are not to scale and are approximate.  
"As built" dimensions and areas may vary from those shown.

PLAN B  
2 BEDROOM FIRST FLOOR  
1,160 SQ FT



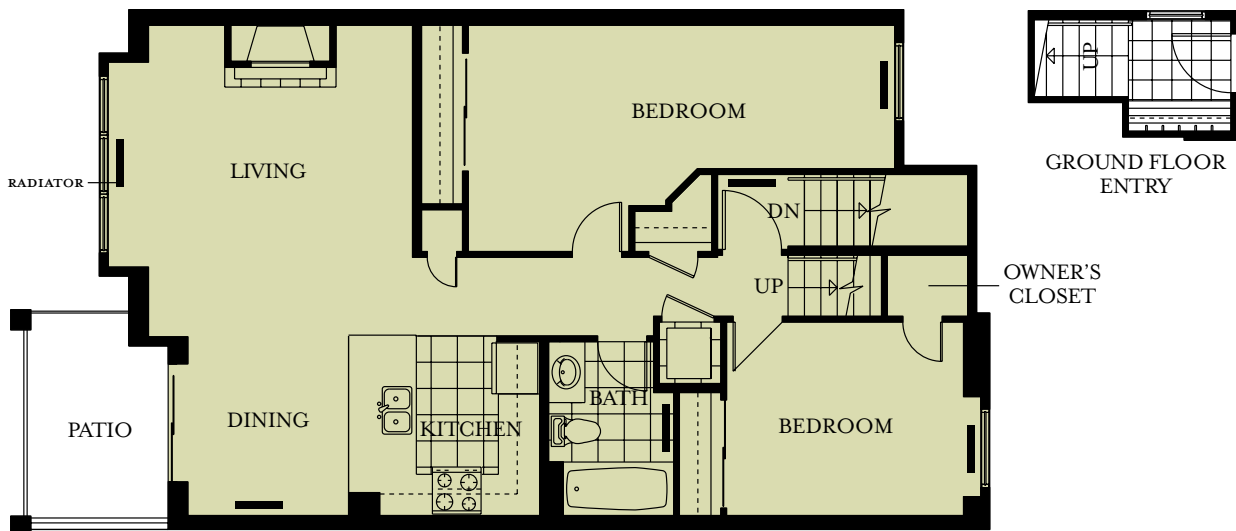
The developer reserves the right to make modifications. All dimensions and areas shown on this plan are not to scale and are approximate.  
"As built" dimensions and areas may vary from those shown.

PLAN C  
3 BEDROOM SECOND AND  
THIRD FLOOR 1,525 SQ FT

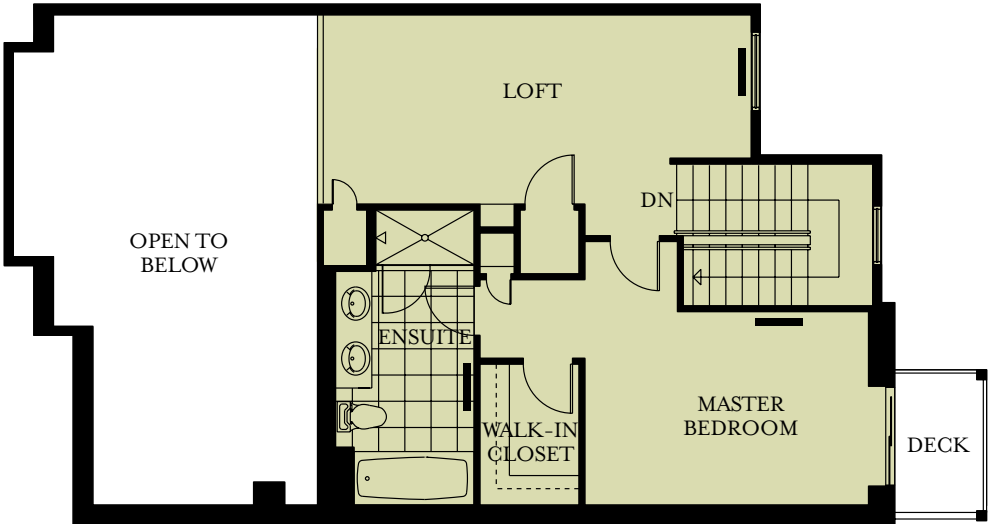


The developer reserves the right to make modifications. All dimensions and areas shown on this plan are not to scale and are approximate. "As built" dimensions and areas may vary from those shown.





**PLAN D**  
 3 BEDROOM SECOND AND  
 THIRD FLOOR 1,725 SQ FT



The developer reserves the right to make modifications. All dimensions and areas shown on this plan are not to scale and are approximate. "As built" dimensions and areas may vary from those shown.



i n s i d e / o u t s i d e

## FEATURES AND AMENITIES

Whether you are outside or inside, you'll love your home at Solstice.

- \* Two contemporary designer schemes
- \* Radiant heat and gas fireplaces
- \* Stainless steel kitchen appliances with gas range
- \* Sleek plumbing fixtures
- \* Granite tile countertops and backsplashes in kitchen and master bath
- \* Slate flooring gracing entrance foyer, kitchen and baths
- \* Wood blinds and wood trimmed windows
- \* Wood doors with stainless steel hardware
- \* Lockable owner's closets
- \* Located just off the 16th fairway of the Sierra Star Golf Course
- \* Common area hot tub set in natural landscaping overlooking the beautifully-groomed fairway
- \* Private balconies
- \* Heated underground parking with secure entry
- \* Convenient elevator service from parking to ground level
- \* Set amid the beauty and scent of firs and old growth pines
- \* Surrounded by the Sherwins, the Whites and Mammoth Mountain
- \* Adjacent to proposed Sierra Star bike/pedestrian path
- \* In the heart of Sierra Star, the planned resort within a resort

## DESIGNER OPTIONS:

- \* Designer Range and Microwave ensemble
- \* State-of-the-art electronics & entertainment package with integrated surround sound stereo and flat screen TV
- \* Stainless steel apron sink and faucet
- \* Security system
- \* Luxurious in-floor heating in kitchen and bath
- \* Ceiling fans

## ONLY 25 HOMES ARE AVAILABLE SO ACT NOW.

The countdown has begun. Act now and you could be living in one of Mammoth's most exciting new communities.

- \* Have it all - an award-winning village, innumerable mountain activities and the privacy and energy of this exclusive community.
- \* Live and play on Mammoth's premier 18-hole championship golf course.
- \* A place others will love so much, they'll visit even when you're not there.
- \* Finding a town home in Mammoth is rare, finding one of this caliber, rarer still.

## HOW TO BUY

The Solstice town homes will be available for purchase on August 7, 2004 at the VIP selection event in Mammoth Lakes.

Each townhome can be purchased by way of our "Limited Priority Reservation Program". This program has been designed to help prioritize the release of information, and more importantly, prioritize selection times for the purchase of your mountain home. Securing a reservation grants you "Preferred Purchaser" status.

### PREFERRED PURCHASER BENEFITS:

- \* Exclusive Preview of the information
- \* Qualify for VIP Purchase Incentives
- \* Secures a Priority Position for the VIP selection event on August 7, 2004

With just 25 homes available, it is in your best interest to acquire a reservation at the earliest possible time. Preferred Purchaser Reservations will be accepted during the week of July 12, 2004.

To Secure a Preferred Purchaser Reservation we require a signed reservation certificate and a refundable deposit of \$5,000 payable by check to Inyo Mono Title Company.

Securing your reservation DOES NOT obligate you to purchase. It simply places you on a list of our Preferred Purchasers who will have the exclusive opportunity to purchase (subject to availability). In the event that you do not purchase, for whatever reason, your reservation deposit will be completely refunded.

To secure your Preferred Purchaser Reservation, please call your Resort Specialist at (800) 421-7005.

We look forward to working with you and helping you select a mountain home at Solstice.

Regards,

The Solstice Sales and Marketing Team

[solsticemammoth.com](http://solsticemammoth.com)

